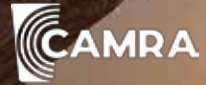




O to K

From Ossett To Knottingley
Issue 99 . Summer 2026 . FREE!



PUB OF THE YEAR LUIS BAR, WAKEFIELD



READ ONLINE BY
SCANNING THIS
QR CODE

The Angel

WAKEFIELD ROAD
WF7 7AB
01977 611276

A traditional, well established local

Two Real Ales - Black Sheep and a
changing guest from Yorkshire breweries



Quiz Night : Wed 8.45 pm

Open Times : Mon 12-10

Tues - Sun 12 - 11

Meal Times : Mon- Sat 12:00-20:00

Sun 12:00-18:00

Booking advisable by phone

JOIN THE ACKWORTH REAL ALE TRAIL

MASONS
ARMS

Community Pub Award 2023 and 2026
Bell Lane, WF7 7JD
Large Two Level Beer Garden



Three Real Ales - Bradfield Farmers
Bitter and Blonde and guest

Quiz Night - Thurs 8.30pm

Live Music - Sat 9pm, Sun 4-7pm

Mon-Tue 4-11pm, Wed-Thu 8.30am-11pm,

Fri-Sat 8.30am-1am, Sun 12-10pm

Breakfast served 8.30-11.45am on Wed-Sat

Lunch 12-2.30pm, Dinner 5-8.30pm on Wed-Sat

Sunday Lunch 12-5pm



3 REAL
ALES



LIVE
MUSIC
SATURDAY & SUNDAY

PIZZA
CLUB
OFFERS
AVAILABLE
ALL WEEK

QUIZ
NIGHT
THURSDAY
8.30PM

LIVE
SPORT
SKY & BT

OPEN MON & TUES 3PM - 11PM
WED - SUN 12PM - 12AM

20 WAKEFIELD RD, ACKWORTH, PONTEFRAC T WF7 7DE

Celebrate with us

Friday 7th August &
Saturday 8th August

From 12Noon onwards.

Featuring special collaboration brews by

WAKEFIELD BREWERIES

Chin Chin,
Fernandes,
Five Towns,
Tiger Tops &
Many more!



THE RED SHED, 18 Vicarage St Wakefield WF1 1QX

Hello and welcome to Issue 99.

We are one issue away from the big 100 of From Ossett To Knottingley. What started as A4 sized leaflet quickly grew into a printed magazine edited by Bob Wallis for the first 52 issues before I took over. In the next issue I hope to look back on last 25 years of the magazine. If you have any recollections please let me know.

Also this year we are celebrating a special anniversary which is 50 years of campaigning for real ale and pubs in the Wakefield area. We are hosting this with the help of our friends at the Wakefield Labour Club (The Red Shed) on August the 7th and 8th.

We will have special beers brewed by some of Wakefield's best breweries, some in collaboration with us. Entry is free on both days from Noon and we will have live music and food available to buy on the Saturday.

We hope to see you there!

Congratulations to our cover stars of this issue Luis Bar in Wakefield for winning Pub Of The Year and to the Wakefield Labour Club for winning the Club Of The Year (we'll have photos next issue).

Voting for our various awards couldn't be more simple by visiting our website (wakefield.camra.org.uk) and selecting whichever vote is active.

All you need is your name and CAMRA number that we can use to verify you are a Wakefield member.

Please consider voting.

***Enjoy the magazine
Mark***

Branch Diary

June 6th Day Trip to Buxton. Leaving Red Shed 9am.

June 13th 1pm Branch Meeting, Junction, Castleford

July 2nd 7.30 Branch Meeting. Hop, Wakefield (TBC)

Aug 7th/8th CAMRA 50th AT THE RED SHED

Aug 15th Branch Meeting. Black Swan, Overton (TBC)

Our branch meetings are great way for an evening out, it isn't all formal and our committee meetings are open for all to attend.

Some meetings are provisional, you can keep up to date on all events by following us on Twitter and Facebook or visiting our website wakefield.camra.org.uk/branch-diary

*Branch Meetings are Thursday 7.30pm unless stated
Committee Meeting are Tuesday 7.30pm unless stated*

CONTENTS

PUB AND CLUB NEWS	4
Pub Of The Year - Luis Bar @ Fernandes	
HARK TO MOPSEY	11
For a good meal and decent pint.	
EASTER IN BELGIUM	12
Our trip to Tournai	
CAMRA DAYS OUT	14
Day out in Brighouse.	
USING THE TRAIN	18
A guide to getting to Wakefield by train.	
BEER SCORING	21
A new scoring system being introduced.	
BREWERY NEWS	22
Local news from our breweries.	
LOST CAUSE IN WAKEFIELD	23
Our newest brewery open brewery and tap in Wakefield.	
CONTACTS	23
Wakefield CAMRA contacts and other information.	

Craft Booze, Normanton



Andy has move into bigger premises in the centre of Normanton and expanded the offering in the process. The new venue opened in early May and features two handpulls which will feature local breweries as shown in the photo below with both Lab In The Garage of Castleford and South Kirkby's Chin Chin available on the opening weekend.



In addition to this there is a wall of keg beer also featuring independent breweries including newly relocated to Wakefield Lost Cause and also others including on my visit an excellent Bitter from Brew York. A lot of styles were featured including a stout, ipa and a brilliant looking sour that resembled a milkshake.

You can find the bar very easily, it's on the main square across the road from the bus stop if you are coming from Wakefield on the frequent 189 service.

Good luck to Andy on the expansion and it is fantastic to see a new independent bar opening supporting our local breweries and bringing this to Normanton.

Outwood WMC

It was a genuine pleasure to find another venue in Outwood WMC serving cask ale.



Offering JW Lees Boddingtons as a regular cask ale with a rotating guest (often from Rudgate range).



Outwood WMC is open to non-members. It is located on Ledger Lane, which is off Leeds Road where the St Leger is.

They have a beer festival planned for Saturday 27 June which will include food, music and family fun and incorporate the England v Panama world cup match.

More Pub News

Brewers 1841, Healey: Congratulations on winning the Best Independent Pub or Bar - Rural at the SIBA Business Awards in April.

Cherry Tree, Horbury: Is under new ownership with the Horbury Ales brewery equipment sold also. There has been a refurbishment and the pub still has real ale.

Damelio, Wakefield: Reported to now have real ale with Farmers Blonde on.

Fox and Hounds, Thorpe Audlin: Has closed.

Miners Lamp, Alverthorpe: The former Red Lion has reopened under new ownership and looks very smart with three dart boards and large screens for sport.

Luis Bar - Pub Of The Year



Our Pub Of the Year Award for 2025 was presented to Luis Bar at Fernandes in Wakefield City Centre at the end of April. It was congratulations and compliments all round to Liz and Howard Hughes, the Licensees at Luis Bar at the presentation full of locals, visitors and CAMRA members.



It is the first time since 2007 that the pub has won the Pub Of the Year. The pub and brewery tap has been known as Luis Bar at Fernandes since 2021 following a major refurbishment with the bar moving to the lower of two floors.

Mark Goodair (CAMRA Branch Chairperson) said: "We are here to present our 2025 Pub of the Year Award, it is the first time in 19 years that Fernandes has won the award and it's quite an achievement. It is the only brew pub in the city centre which serves its own beers as well as from local, including the Five Towns and Tigertops, breweries. It is my pleasure to present this award to you Liz."

A jubilant Liz Hughes, said "Thank you to our amazing team (Gayle, Viki, Steve, Michael and Dawid). These guys make the pub. Thanks to you all for drinking the beer....thank you to everyone!"

Fernandes was founded in 1999 by David and Maureen James who sold it to Ossett Brewery in 2007. Fernandes is steeped in Brewing History, the building was an original 19th Century malthouse for Fernandes Old Bridge Brewery on Chantry Bridge and later the Beverley Eagle Brewery. Luis Fernandes, a Portuguese Immigrant, constructed the building in 1880s. Today, Luis Bar serves up to nine Cask Ales with all of the Fernandes beer brewed in the on site brewery situated in the cellar.



The Pub Of the Year Award is the 'end product' of a detailed and thorough selection process where all Wakefield CAMRA members nominate pubs to draw up a short list of four pubs. Finally all members are invited to vote again to determine the Pub Of The Year from the short list. All the short listed pubs inevitably serve excellent Real Ale and have a vibrant and welcoming atmosphere to all their customers.

David Oates

House Of Ales, Pontefract

Very enjoyable visit to House Of Ales in Maud's Yard Pontefract where the host Karl is very welcoming and now features cask ale with beers available from local breweries which were both well served.



There is also a wall of craft keg beer from UK and European breweries especially from Belgium along with fridges and shelves full of bottled and canned beer. A really excellent venue.



The Tawny, Ossett

Paul and Becky are the new owners at The Tawny Ossett, there's so much to tell about the excellent food and of course the beers. Such a nice family they really have brought a lift to the Ossett pub scene.



Very impressed by what they've brought to the pub so please support them, you won't be disappointed!

New Albion, Alverthorpe



Good to see Yorkshire breweries well represented, the Perfect Circle from Wensleydale was spot on at the always excellent New Albion in Alverthorpe.

**Scott is our Pubs and Local Officer
contact him at
gingerbeerking@hotmail.com**

Wakefield CAMRA proudly presents:

Cheers for 50 Years of Real Ale!



*A celebration of 50 years of CAMRA
1976-2026*



Join us at The Red Shed
Friday 7th August &
Saturday 8th August

From 12Noon onwards.



Featuring special collaboration brews by

WAKEFIELD BREWERIES

THE RED SHED, 18 VICARAGE ST. WAKEFIELD WF1 1QX



Pub And Club News

Ackworth Report: I am sat writing this report in the 4th week in April, with the sun shining and no rain at all forecast until May at the earliest. So, I thought, what about focusing this update on the top quality beer gardens and outside drinking spaces provided by all five pubs to enjoy a pint or two of Real Ale.

The Annual Ackworth Beer Festival at the Cricket Club (behind the Boot and Shoe on Wakefield Road) will take place over the weekend of Friday 25th to Sunday 27th September.

Angel: Simon is the new general manager and a change of bar staff has taken place in the last month. The beers on offer have changed to Theakston Best Bitter and Lightfoot IPA. A Karaoke now takes place on the last Saturday of the month. The newly refurbished beer garden to the front comprises of three distinct sections: A decked area; a paved area under an open topped pergola; and, a grassed area with circular tables and umbrellas.

Boot and Shoe: A frequent changing guest from Ossett joins Landlord and White Rat. Live music sessions on Saturday from 16:00 to 18:00 and 20:00 to 22:00 are very popular (often outside on the terrace in nice weather). The large front terrace garden is part paved and part artificially grassed. An open topped pergola, with intertwining climbing plants, open paved areas

with tables and umbrellas, a covered decking area and a heated area with transparent sides and an outside bar combine to produce a very Mediterranean Style Terrace.

Brown Cow: Monday opening from 15:00 has been introduced recently. Every other Tuesday from 19:30 onwards is Open Mic Night with Jake E-B. Tables with umbrellas to the front overlook High Ackworth Green. A paved area, partially covered, shaded beer garden is at the back of the pub.

Masons Arms: The barn and stables conversion will provide an additional eating area is planned to be completed by the end of June. An extensive, two level terraced beer garden to the rear is partially covered by a roofed pergola, with padded seats, is attached to the building at the rear of the Masons. The open paved area has tables and umbrellas.

Rustic Arms: A changing cask ale is available. There is an Open Mic on Tuesday 20:00 and a Quiz and Karaoke night on Friday. There will be live music acts on the second Sunday of May, June and August. a covered open sided area attached to the building leads out onto a large grassed beer garden with a childrens play area. The beer garden overlooks a securely fenced off fishing lake.

David Oates



Club Of The Year - Wakefield Labour Club

Congratulations to the **"The Red Shed"** for winning our Club Of The Year award.

We will be presenting the award during the East/West Festival which is being held during the May.

The Club is celebrating 60 years and as part of this we will be hosting a special weekend in August with exclusive beer from some of our local breweries on the bar.

During the event there will be live music and food available and the club will be open from Noon on both Friday and Saturday,

We look forward to seeing you there!



Pubs, Pints, People.

**FREE
ENTRY**
to all 100+
CAMRA-run
beer
festivals

Death or Glory?

Just a pint please, actually.

CAMRA membership expands your choice of beer, pubs and festivals. Find the best pints, and the places you want to drink them.

Get £30 of beer vouchers, discounts on real ale, free entry to 100+ beer festivals around the UK and more with membership.



Join and save on beer.
camra.org.uk/join



The Junction

Carlton St, Castleford WF10 1EE



**Unique Multi-Award-Winning
Traditional Pub**

OPENING TIMES

Monday, Wednesday 3pm – 9pm

Thursday 3pm – 9pm

Friday 2pm – 11pm Saturday 12 – 11pm

Sunday 12 – 9pm

Traditional Pub Games

Tel: 01977 277750

Web: www.thejunctionpubcastleford.com

Events: www.facebook.com/JunctionPubCas

THE BLACK ROCK

WAKEFIELD

WF1 1PQ

WAKEFIELD CAMRA PUB OF THE YEAR

SIX CHANGING
GUEST CASK ALES
AT ALL TIMES
A RANGE OF
WORLD
BOTTLED BEERS

OPENING TIMES
Mon-Fri 11-11
Sat 11-12
Sun 12-10.30



2 THREE B'S MICRO PUB 2

REAL ALES

REAL GIDERS



Bridlington's
Real Ale
Destination

2 Marshall Avenue
Bridlington YO15 2DS
01262 604235



EVER-CHANGING
RANGE OF ALES

10 CIDERS

LARGE GIN
SELECTION

30
SEATS
& OUTDOOR
SEATING

OPEN
SUMMER | WINTER
SUN 12 - 9 | 2 - 9
MON - TUE
closed
WED - SAT 12 - 10 | 1 - 9

BAR SNACKS
♦
CHILDREN &
DOGS WELCOME
♦
HOT & COLD
SOFT DRINKS
♦
TAKEOUT
AVAILABLE

threebspubbrid.co.uk
@ThreeBsPubBrid



CAMRA
Pub of the Year 2024
Yorkshire
JOINT WINNER
National
FINALIST (TOP 4)



A Good Meal And A Decent Pint - Hark To Mopsey

Approaching Normanton from Wakefield direction on the pre-bypass main road you cannot fail to notice on the right a most imposing pub called Hark to Mopsey with signs showing hunting scenes and a magnificent old IND COOPE'S BURTON ALES sign. This pub dates from 1814 and was originally named The Dog, standing in Mopsey Square. In 1838 the pub was given the name which it still has today. One story says that Mopsey was the lead hound in the pack, hence the hunting scenes, but another says that Mopsey was the landlord's dog who woke guests up and saved them from a fire. We can reasonably conclude that the building has a very interesting history.



The Ind Coope's Burton Ales have long gone but on the day of our visit a decent pint of Theakstons Best Bitter was on offer at a most reasonable price. They had reduced to one cask ale, as other pubs seem to in warm weather due to the inexplicable reason that drinkers desert cask ale as the weather gets warmer.

Behind some very posh glass doors engraved with 1814 you will find their restaurant. 1814 is its name. I like the use of years in names, as in The Brewers 1841 and also 1903 in Hooton Pagnell, an establishment just over the boundary of Wakefield Camra's patch.



On this occasion I had the company of Chief Inspector Locale and Pubs Officer and our respective consorts, giving us a chance to try several dishes. We were shown to our table in a very smart well-kept room. At 6.00 we were the only diners but we were soon joined by a large party and a couple of other diners.

Clean, clearly presented menus awaited us with quite an extensive choice. A separate vegetarian and vegan menu also offers an impressive range of choices. We decided it was to be a two course meal but we could have been tempted by pan fried scallops or pork belly burnt ends. I am told the prawn cocktail is excellent and very large.



Along with the traditional main courses the menu features Thai green curry, harissa lamb chop, seafood linguine and other varied choices. There is a large choice of side dishes too. Our selections were on the traditional side: 10 oz gammon steak, steak and ale pie, beer battered fish and chips and short rib and beef brisket lasagna. Everything arrived well presented and all turned out to be most enjoyable. There being just about room for dessert we chose to share an excellent lemon cheesecake and a crème brûlée with Baileys.

Service is excellent and attentive with additional drinks brought to the table if requested. We paid £92 for four main courses, a couple of shared desserts and a few drinks. There are places in our area who would have charged quite a lot more. The combination of busy local and restaurant works very well.

For once, there is a decent bus service to the featured pub as it is on the regular 189 Wakefield-Castleford route which runs until late.

Hark to Mopsey, Wakefield Road, Normanton, WF6 1BB; 01924 891689. Meal service: Wed-Fri 1700-1930; Sat 1700-2000; Sun 1200-1700. Facebook Hark to Mopsey is kept well up to date with menus and other information.

Colin Williams

Follow Colin on Bluesky
@ColinWilliams14



Belgium Easter 2026

Leaving at 9pm on Thursday 2nd April and returning Tuesday 7th Wakefield CAMRA again organised a weekend in Belgium.

This year we stayed in the historic city Tournai in Wallonia and visited a number of breweries and other towns and cities.

Words by : Dave Pickersgill, Wakefield CAMRA



Cathedral of Our Lady

Over the Easter weekend, I was fortunate to take part in the Wakefield CAMRA trip to Belgium. Apart from the Covid-years, these trips have been an annual event since 1993. The group bases itself in a central location and commences each day with a guided brewery visit. This is followed by a few hours in a local city before returning to base for the evening. This year saw us housed in the recently refurbished Hôtel Hemera in Tournai, the home of a Cathedral, the UNESCO World Heritage listed Belfry and several interesting bars. Day one saw a visit to De Ranke (Dottignes).



Established in 2005, their unpasteurised and unfiltered beers, utilise whole hops in a traditional gravity-led set-up. Brewing to sale for their heavily hopped high IBU beers (40-70) takes between 8 and 20 weeks. Their most well-known beer is XX Bitter (6%).

The following day saw us visit Brasserie Deseveaux (Boussu), who were set up in 2011. Production on the old family farm commencing in 2014. They specialise in

brewing with buckwheat and spelt in conjunction with malted barley and wheat. 35% of production is organic. Mostly Belgian hops are used including some grown on-site (Cascade, Goldings, and Phoenix). Water, from their well, is treated before use. Their most well-known beers are the Abbaye de Saint-Ghislain and Sarazen ranges.



Brasserie Deseveaux

Day three included a tour of the Chateau de Leignon (Ciney) Brewery. This opened in 2024 as part of a larger complex in an ex-farm on the estate. Belgian Process Solutions installed the extensive kit. They currently brew 3-4 times/month. Beers include Ambree (5%), IPA (5.5%), and Imperial Solstice (8.1%).



Chateau de Leignon



Brasserie de Leignon Brouwerij

The final day saw a morning visit to Brasserie de Cazeau (Templeuve). The brewery is heir to a legacy name, the current brewery dating from 1995. It is a real mix of the old and the new, including a wood-panelled copper, lots of stairs and many 'interesting' sets of pipework. About 70% of production is secondary fermented in the bottle. The Tournay range includes Blonde (6.5%), Noire (7.6%), Saison (5%), Noel (8.2%), and Triple (9.4%). We also provided with a sample of Tournay Hop Harvest 2025 (4%) straight from the fermenting vessel. The taproom also has an aged Jeu de Fer table.



Brasserie de Cazeau

Along the way, visits were also made to Brugge, Mons and the Duvel-Moorgat Maredsous Monastery microbrewery and bar. Among other bars, Tournai provided Au Vieux Tournay (Grand Place 48) and Aux Amis Renuis (Rue Saint-Martin 89). The former opened in 2017 and now has a menu of over 90 beers while the latter is an unspoiled bar with ornate bar tap.

The oddest beer name met was at the Borinage Brewery Tap (Boussu) which we visited on Saturday evening: Urine Double IPA (7%).



Borinage Brewery Tap

In short, an excellent few days: good beer, good breweries, and good company. Thanks again to the organisers and especially our drivers Steve and Tom from Ross Travel.



Out now is CAMRA's Good Beer Guide Belgium, the essential guide to one of the world's great beer destinations.

Completely independent, it features over 1,000 Belgian beers, the brewers who make them, and the very best places to enjoy them.

The book is available direct from CAMRA.

BRIGHOUSE BY TRAIN



Market Tavern

We met at The West Riding Pub on Dewsbury Station to catch our 13.06 train to Brighouse having sampled an excellent pint of November Pale Ale 4.4% by Verdant to set us on our way.

Less than 10 minutes later we had arrived - our first point of call was The Market Tavern. The bar is split into a traditional bar area with a more lounge-ish area to the rear. The beer garden is to the rear. Small and busy pub serving 6 Real Ales.

Nice pint of Selby American Pale 4.2% by Jolly Sailor followed by a Goose Eye Bitter 3.9% and helped myself to a couple of potted beef sandwiches which was free to punters. Cracking pub no wonder it won CAMRA Pub Of The Year 2020 and numerous awards.



Mamil

Middle Aged Men In Lycra.

Our next stop located next to Kwik-Fit is the cycle themed bar serving 3 Real Ales. Busy with plenty people dining. My beer Pride & Joy 4.8% from Vocation went down well, we had to sit outside in small beer garden at the front until a table became available indoors.

Chris suggested we checked out The Red Rooster so a 15 minute walk ensued but on arrival the pumps turned round to be told that a Greene King beer will be on soon. No Thanks. Shame as it is a lovely looking pub and nobody in at 3pm! Taxi ordered to next pub.



The Crafty Fox

Next stop is at this specialist Craft & Real Ale Bar situated on the main shopping street, really buzzing atmosphere in here. 6 Real Ales on i chose Harlequin 4.4% Single batch Cask Special from Little Critters really spot on, had to try the warm Pork Scratchings too from the machine, we sat in the room upstairs and that was busy too. Chris got a third of some 11% stout which was sublime as i sneaked a taste. Had a couple in here, another great bar.



The Richard Oastler

This Wetherspoons pub was named after a man who lived at nearby Fixby Hall for 20 years and famously campaigned against excessive working hours in the 19th century was our next call. A really busy pub with 5 hand pulls on offer and I chose the Yorkshire's Best 3.8% from Rooster Brewing Co. at £2.89 a pint.



The Barge

This modernised Victorian pub, located near the Canal Basin, is separated from the town centre by the bypass. Inside it has narrow bar with large rooms at each end. Very lively when we arrived it had a couple of wickets on, two from Small World Brewery. I chose the Barncliffe Bitter and it was on good form, a friendly and busy pub, we just had the one before our final call..



Commercial Railway

Situated next to Brighouse Train Station, this friendly pub offers up to 5 Real Ales. On entering you pass into the main room comprising a bar to the right and seating areas to each side, one with a dart board and a real fire on the other.

There is a separate lounge seating area to the front on the left, with a Pool table in the rear room. On our visit it had 3 ales on my final beer was Bermuda Triangle 4.2% (East Coast IPA) from Bosun's Brewery, a great pint which went down well with a black pudding pork pie purchased from behind the bar.

A stag party was in and enjoying themselves with one guy challenging a local to darts which was an entertaining watch before heading for our train back to Dewsbury.

Overall an excellent day out and looking forward to visiting again soon.

Russell Gaunt

SOUTH KIRKBY & MOORTHORPE
TOWN COUNCIL

BEER FESTIVAL



20 CASK ALES
CRAFT BEERS
LAGERS
CIDERS
GIN BAR
HOT FOOD
LIVE MUSIC

26th - 28th June 2026

Friday/Saturday 1pm-late
Sunday 1pm-6pm

FREE ENTRY

**ALL PROCEEDS TO
THE MAYOR'S CHARITY (TBC)**

Groue Hall, South Kirkby. WF9 3QF (A SHORT STROLL FROM MOORTHORPE RAILWAY STATION)

INDIE BEER
TB


**CHIN
CHIN**
BREWING CO

AN EVER-CHANGING RANGE OF CASK ALES

INDIE BEER
TB



Email: beer@chinchinbrewing.co.uk

NEXT OPEN WEEKEND:
FRI 10th - SUN 12th JULY. 1pm-9pm

53F THE LIDGATES, LANGTHWAITE GRANGE BUSINESS PARK, SOUTH KIRKBY, PONTEFRAC. WF9 3NR.

BOONS



6 Queen Street, Horbury,
Wakefield, WF4 6LP

SIX ROTATIONAL REAL ALES

plus

Timothy Taylors Landlord

Rotating craft ales

Rotating craft ciders



Where Good Drinks and Good Times Collide

"A PROPER ale house with magnificent mix of great cask ale and plenty of keg offerings... Manager James is a top fella and the aesthetic of this old coaching inn is absolutely great with a central bar that you can get the whole way around and a massive welcome... a busy, thriving pub that's doing everything the right way..." *Great British Pub Crawl*



Getting Around By Train

Getting to and from the Wakefield Branch area could not be easier. Here is a guide to the stations and some pubs close by.

WAKEFIELD

We have two stations, Westgate and Kirkgate. If you are coming from other towns/cities in Yorkshire then these are the train stations where direct trains call at Wakefield.

Barnsley - Kirkgate	Leeds - Both
Bradford - Both	Rotherham - Westgate
Doncaster - Westgate	Sheffield - Both
Huddersfield - Kirkgate	York - Both

If you prefer walking down rather than up start at Westgate. Once at the Black Rock for example it is only five minutes to the Wakefield Labour Club.

Wakefield Westgate

Served by Cross Country, LNER and Northern. You can get to Wakefield Kirkgate, Outwood, Pontefract and Moorthorpe directly from here.

The station entrance isn't actually on Westgate anymore as it moved on to Mulberry Way but it's easy to find. From here the nearest pubs Inns Of Court, Harry's Bar, Old Printworks, Hop and Black Rock.

Wakefield Kirkgate

You can get to Wakefield Westgate, Castleford and Pontefract directly from here and is served by Grand Central, Northern and Trans Pennine Express. Use this station if your plan is to go the Wharf, Luis Bar & Fernandes, Six Chimneys, Wakefield Labour Club and the new Lost Cause Brewery Tap.

One important thing about Kirkgate station despite its size - there are no toilets.

Castleford

You can get to Glasshoughton and Pontefract from here. There are two direct trains from Wakefield Kirkgate and they only take around 10 minutes. The station is in the town centre so all pubs are within easy reach with The Junction being the closest.

Trans Pennine Express now run an hourly service from York to Manchester Piccadilly which calls at both Castleford and Wakefield Kirkgate.

Glasshoughton

This station is next to the Junction 32 and Xscape complex and has the Winter Seam Wetherspoon there. It's a 20 minute walk to Front Street where you will find a number of pubs/clubs including George V WMC and Houghton.

Moorthorpe

To get here from Wakefield use the Sheffield train from Westgate, it is an hourly service. You don't need to go far to find the nearest real ale pub as it is the Mallard and it is on the station.

Normanton

The same trains as for Castleford. The new Craft Booze Shop and Hark To Mopsey are here but the 189 bus is probably better to use.

Outwood

This is the stop between Wakefield and Leeds. It's about a mile to walk from the station to Leeds Road where the majority the pubs are so it you are better using the 110 bus as this goes past all of the Outwood pubs.

Pontefract

There are three stations in Pontefract, none of them are particularly handy for the town centre. Of the three Tanshelf is the best, the Old Grocers is around a 15 minute walk, and is served by the Leeds-Knottingley train that goes through Wakefield Kirkgate, this train also stops at Monkhill which you can also get to from Glasshoughton.

Sandal & Agbrigg

The Castle is a 10 minute walk from here but the 59 and 106 buses offer a better service.

Did you know?
You are just an hour away from Britain's biggest beer festival!

FREE ENTRY FOR ALL CAMRA MEMBERS!

It's all just a train ride away...
- Regular services through the day from Wakefield Westgate
- Journey time from just an hour and nine minutes
- Festival site in walking distance from station

THE 47TH PETERBOROUGH BEER FESTIVAL
AUGUST 25 TO 29, 2026

Hundreds of real ales, plus keg, lager, cider, world beers, wine, gin and rum
Live music, food and traditional pub games
Plus CAMRA shop and discovery bar

Visit pborbeerfest.camra.org.uk for more details

WAKEFIELD CAMRA
PUB OF THE YEAR 2024

The Old Grocers
Pontefract

MICRO PUB

25 Beastfair, Pontefract

Changing Range Of Up To 8 Cask And
Craft Keg Beers

Real Cider Also Available

PUB OF THE SEASON AUTUMN 19

WINTER 21, AUTUMN 22, SUMMER 24

Mon/Tue Closed,

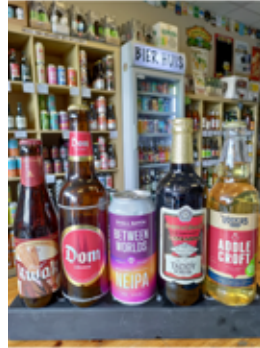
Wed 3pm - 11pm, Thu 3pm-9pm

Fri/Sat 1pm - 11pm, Sun 12pm - 6pm



LOVE DRINKS???

AWARD WINNING
SPECIALIST DRINKS RETAILER & MICROBAR



GOOD BEER
GUIDE
REAL ALES

500+ BEERS INC

BELGIAN

GERMAN

CRAFT

80+ CIDERS

+ TASTING
NIGHTS

Bier Huis
17 Towngate
Ossett
WF5 9BL 01924565121
info@bierhuis.co.uk



GEORGE V WMC

There's a great welcome at this popular busy club for members and non members with a fine selection of beers and lagers including three cask beers from **Old Mill, Black Sheep and a local brewery including Ossett**

Three TVs in the bar and a big screen in the concert room showing all big sporting events on Sky, BT Sport with Racing UK showing daily.

Quiz and bingo on Thursday. Function room available on Fridays.

Artists on Saturday and Sunday with bingo.

Ambassador Club For Castleford Tigers, buy your match tickets at the club.

For more details phone Darren on 01977 552775



HELLIWELL HOUSE
GLASSHOUGHTON WF10 4RN

LUIS BAR

AT FERNANDES
Wakefield

A BEER LOVER'S PARADISE STEEPED
IN BREWING HISTORY SINCE 1850

cask ale, craft keg &
cocktails on tap



OPENING TIMES

Monday - Thursday 4pm - 11pm
Friday - Saturday 12pm - Close
Sunday 12pm - 11pm

5 AVISON YARD, WAKEFIELD, WF1 1UA

Less than a 6 minute walk from Wakefield Kirkgate Train Station
or by car use Thornhill Street Carpark, WF1 1PS (2 hours free parking)

www.luisbar.co.uk [f](#) [@](#) [@luisbarwakefield](#) [t](#) [@luisbarwakey](#)

How's your cask beer?

Rating	Description	Your reaction
Excellent	Exceptional and clear (if intended to be) with fantastic aromas, flavours and ideal carbonation.	Superb! You tell your friends and compliment the cellar manager.
Very good	Satisfying and well-kept with a great appearance, good carbonation and enticing aromas and flavours.	You consider having another and may cancel plans to move to another pub.
Good	Nice appearance, good carbonation, aromas and flavour.	Pleasant but not memorable. You're happy to have another but might consider something else.
Acceptable	Unremarkable and ordinary, with no noteworthy characteristics.	You're unlikely to have another unless it is all there is and there isn't another pub to go to.
Poor	Noticeably imperfect.	Drinkable with resentment, but you politely ask for a replacement.
Undrinkable	Unpleasant to drink, likely with a disgusting taste, incorrect appearance and off/foul aroma.	You politely ask for it to be replaced and consider asking the publican to take it off.

There are tens of thousands of pubs across the country serving cask beers, and many of those serve really good pints.

For lovers of a decent pint, it's important to be able to find them. CAMRA's Good Beer Guide has been the 'bible' for finding the very best ones since 1974 and continues to be relied upon by tens of thousands of people.

CAMRA's online pub guide camra.org.uk/pubs can also help because beer quality is indicated by the '3 Pints' symbols that CAMRA members can see when logged in.

Pubs and clubs that serve really excellent pints, and serve them consistently well, can be potential candidates for the Good Beer Guide.

To help identify them, CAMRA members score their pints whenever they have the opportunity. Their scores help local branches determine candidates for the Guide, and these can change year on year because the standards are high. Serving live cask beer requires skill in the cellar and attention by bar staff all the time. Competition for a place is stiff because only 4,500 places are available.

Up until now, the scoring system has used a numbering system of 0 to 5. But there are problems with this. It

requires memorising the criteria for each score and using them consistently, but memories can be variable. Some people genuinely struggle with numbers, so they don't take part. It becomes open to individual interpretation with resulting inconsistency between scorers. There's also the potential for individual bias and a reluctance to 'award' high scores.

We all know when we are drinking a good pint that's been well-kept, and we also know when a pint is very good or excellent – who cannot resist telling everyone else about it! And likewise, a pint that is simply OK or, hopefully not often, undrinkable.

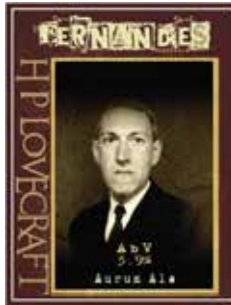
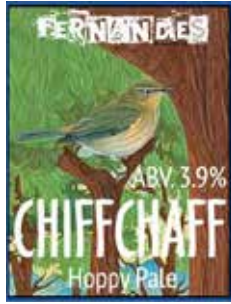
So, to make things easier for everyone, a new intuitive ratings system is being introduced, which is more descriptive of the beer being drunk.

Each of the new ratings has a description and a likely reaction to help you pin down the most appropriate rating.

Ratings can be recorded on CAMRA's online pub guide camra.org.uk/pubs by all CAMRA members so start rating your beer now.

If you're not a CAMRA member but would like to rate your beers then head over to camra.org.uk/membership.

Fernandes, Wakefield



Recent new beers have included:

Yippee 4.2% Chinook, Green Bullet & Cascade hopped pale ale

Black Crunchie Rock 5.5% Collaboration with Five Towns Brewery. 6 malts, Fuggles, Cacao & Toffee honeycomb Stout

Chiff Chaff 3.9% Nelson Sauvin & Green Bullet hopped pale ale.

H P Lovecraft 3.9% Aurum ale brewed with Spring pale & crystal malts. Hopped with Fuggles & Cluster hops. Deep Amber in colour.

Jolly Boys, Wakefield



Prop'ur Baa of Ossett has a special brew day at Jolly Boys in March.

Courtesy of drink distributor HB Clark the pub brewed up Prop'ur Blonde.

At 3.9% the beer was available in the pub during April.

Ossett Brewery

Ossett won big at the SIBA (Society of Independent Brewers & Associates) at the North East Indie Beer Awards 2026 with the following awards,

Voodoo - Cask Speciality Amber to Dark Beer - Gold & Category Champion

Smog Rat - Keg Double & Triple IPA (7.5% and over) - Silver

White Rat - Cask Session Pale Ale (up to 4.4%) - Bronze

Butterley - Cask British Bitter (up to 4.4%) - Bronze

Excelsius - Cask Pale Ales (4.4% to 5.5%) - Bronze

Hell Rat - Bottle & Can Session Lager (up to 4.4%) - Gold & Category Champion

Excelsius - Bottle & Can Pale Ale (4.5% to 5.5%) - Silver

White Rat - Bottle & Can Session Pale Ale (up to 4.4%) - Bronze

And at the International Brewing Awards Hell Rat was awarded Gold in the category of Keg Lager - Class 1 (ABV 2.9% - 4.7%).



The Cask Collab Series is continuing with Electronic Rat; a collaboration with the incredible, ever-evolving Liverpool-based Azvex Brewing Co.

Azvex have never released a beer on cask, so this is a first for the famous brewery, who are widely known for their out-of-the-box brews and crazy cans.

Electronic Rat is a classically crushable West Coast IPA, so Ossett say to expect: A rich, bronze colour, hoppy citrus notes and a smooth mouthfeel.



Fat Rat was made available as a Peanut Butter & Chocolate Stout exclusively on creamy cask.

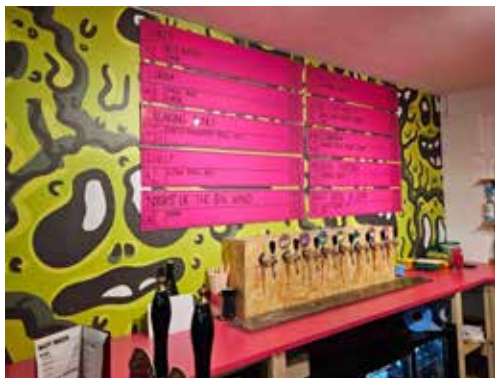
White Rat is also now available in Nitro format in some pubs and also in can available direct from Ossett and also supermarkets.

Lost Cause in Wakefield



Lost Cause have now opened their new brewery and tap in Wakefield. Situated on Calder Value Road, walk down Klrkgate and go under the railway bridge, taking the first left and they are located on the right hand side.

The bar features two handpulls which served on opening Lorra (a 3.8% Pale Ale) and Cordy (a 4% Best Bitter) in addition to 8 keg taps all serving Lost Cause beer. The selection will no doubt change but I particularly enjoyed Stone Cold Mango Mojito, a 5% Mint Lime and Mango Sorbet beer, you could really taste the mint!



With Luis Bar @ Fernandes no more than five minutes away, if you add in the Continental Tap House and The Wharf all within short walking distances of each other it is a fantastic addition to the Kirkgate end of the city.

The initial opening times are Thursday 4-9, Friday 4-9, Saturday 12-9 and Sunday 12-7. Food is available on some of the opening days.

This isn't the end of the pop-up taprooms at the Whitwood site with dates planned currently up to August with the one in May being the 29th and 30th. Good luck to Colin and Vik on their new brewery and tap room.

Wakefield Branch Contacts

CHAIRMAN	MAGAZINE, WEBSITE,
EVENTS/SOCIAL	TREASURER
SECRETARY	Mark Gibson
Mark Goodair	0745 0272680
01924 272244, 07908	otok@wakefield.camra.
553206	org.uk
markgoodair@gmail.com	
LOCALE COORDINATOR	MEMBERSHIP SECRETARY
PUBS OFFICER	Colin Williams
Scott Nightingale	colinwilliams62@gmail.
07866 155441	com
gingerbeerking@hotmail.	SECRETARY
com	Russell Gaunt
NBSS COORDINATOR	russ32ell@hotmail.com
Dave Jones	COMMITTEE MEMBER
wakeybeerscores@gmail.	David Oates, Chris Davis
com	wakefield.camra.org.uk

It's your magazine

Pub food reviews, beer poems and anecdotes, or stories about local pubs are welcomed.

We depend on advertising

B/W: £35 ¼ page, £50 ½ page, £70 full page
COLOUR: £50 ¼ page, £70 ½ page, £100 full page
(10% discount for 4 editions)

No copy? We can create basic artwork for you, included in the charge. Contact the editor.

If you need a change to your current advert or want an advert, please contact me!

Deadline for all advertising and feature copy for Issue 100 is August 1st 2026

Thank you for putting up with us!

Thanks to the following establishments for allowing the Branch to hold meetings recently:

Black Rock, Wakefield
Harry's Bar, Wakefield
Old Grocers, Pontefract

West Yorkshire Trading Standards : 0113 2530241
Citizens Advice Consumer Service on 03454 04 05 06

www.wyjs.org.uk/tradingstandards
or dutyofficer@wyjs.org.uk

If you have a concern about any aspect of hygiene in a Wakefield District pub, ring Food & Consumer Safety on 0345 8 506 506.

Published by the Committee of the Wakefield Branch of the Campaign for Real Ale Ltd.

Views expressed herein are not necessarily the views of the Campaign or the Branch. © 2026 Wakefield CAMRA

Editor: Mark Gibson
Email : otok@wakefield.camra.org.uk
Tel : 07450272680



THE FRESHEST CASK BEER

BREWED
WITH FRESH
ATTITUDE



OSS
BREWERY
ETT

RELENTLESSLY
PROGRESSIVE
SINCE 1998